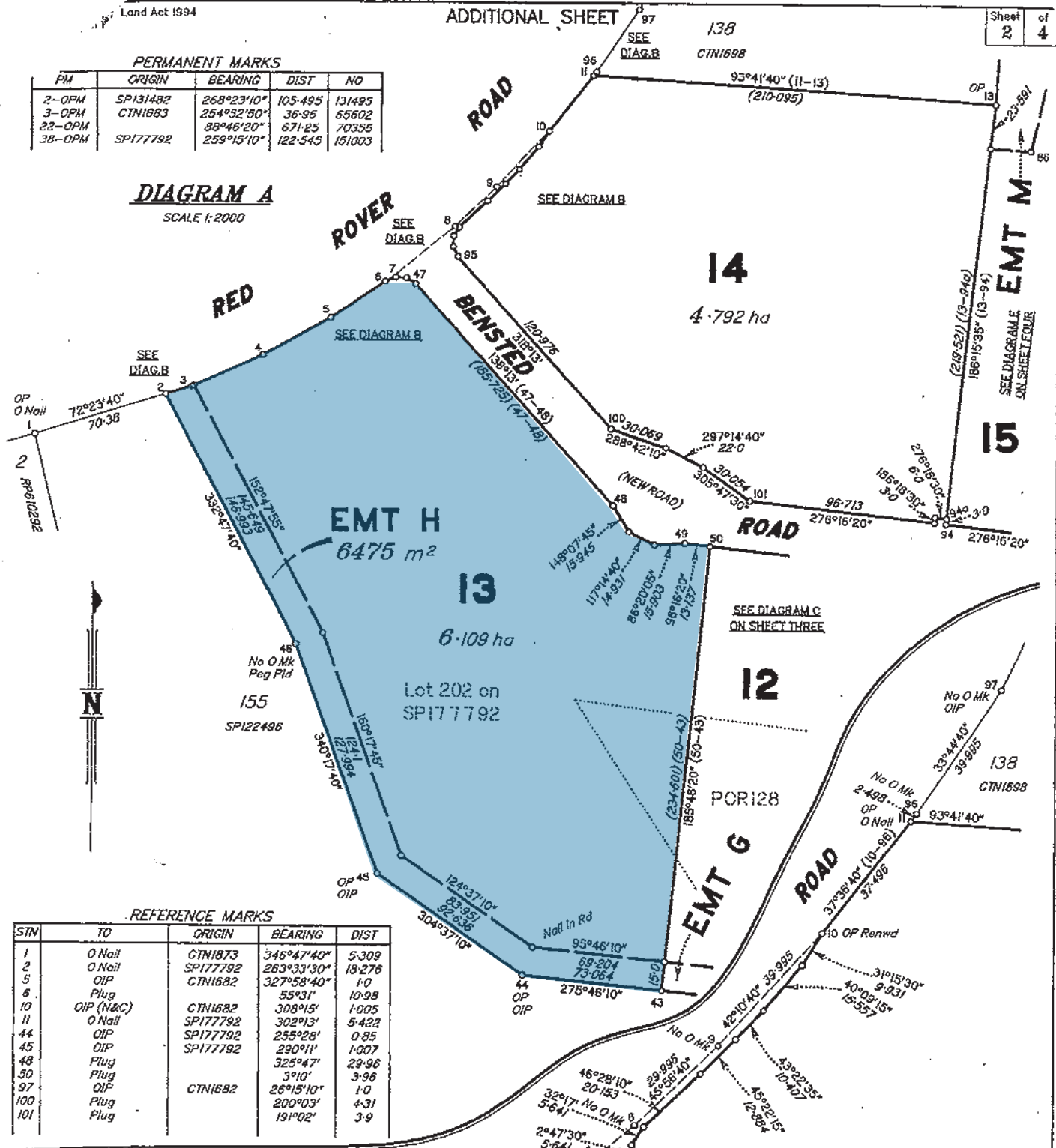


PERMANENT MARKS

| PM | ORIGIN | BEARING | DIST | NO |
|--------|----------|------------|---------|--------|
| 2-OPM | SP131482 | 268°23'10" | 105.495 | 131495 |
| 3-OPM | CTN1683 | 254°52'50" | 36.96 | 65602 |
| 22-OPM | | 88°46'20" | 671.25 | 70355 |
| 38-OPM | SP177792 | 259°15'10" | 122.545 | 151003 |

DIAGRAM A

SCALE 1:2000

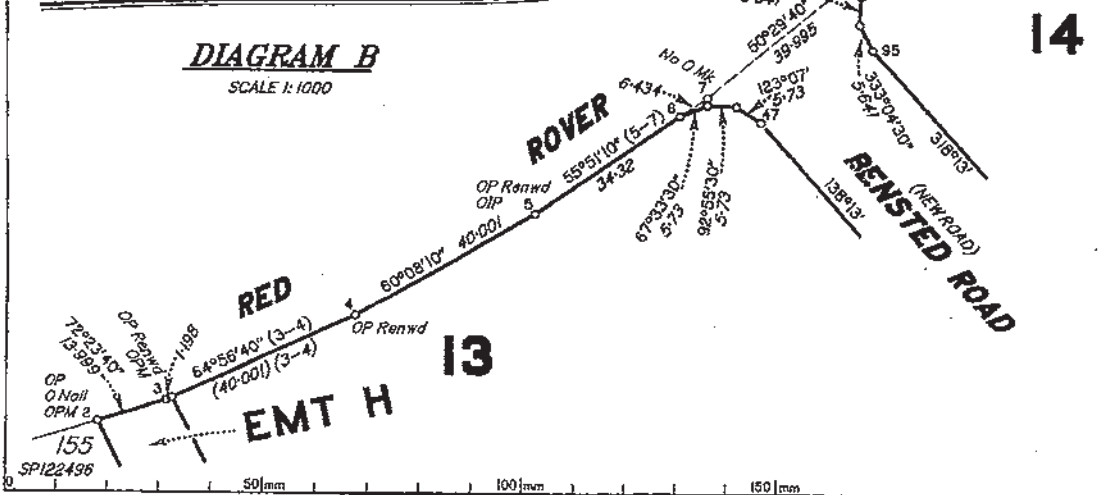


REFERENCE MARKS

| STN | TO | ORIGIN | BEARING | DIST |
|-----|-----------|----------|------------|--------|
| 1 | O Nail | CTN1873 | 346°47'40" | 5.309 |
| 2 | O Nail | SP177792 | 263°33'30" | 19.276 |
| 5 | OIP | CTN1682 | 327°58'40" | 1.0 |
| 6 | Plug | | 55°31' | 10.98 |
| 10 | OIP (N&C) | CTN1682 | 308°15' | 1.005 |
| 11 | O Nail | SP177792 | 302°13' | 5.422 |
| 44 | OIP | SP177792 | 255°28' | 0.85 |
| 45 | OIP | SP177792 | 290°11' | 1.007 |
| 48 | Plug | | 325°47' | 29.96 |
| 50 | Plug | | 3°10' | 3.96 |
| 97 | OIP | CTN1682 | 26°15'10" | 1.0 |
| 100 | Plug | | 200°03' | 4.31 |
| 101 | Plug | | 191°02' | 3.9 |

DIAGRAM B

SCALE 1:1000



State copyright reserved.

Insert Plan Number SP197908

50mm 100mm 150mm