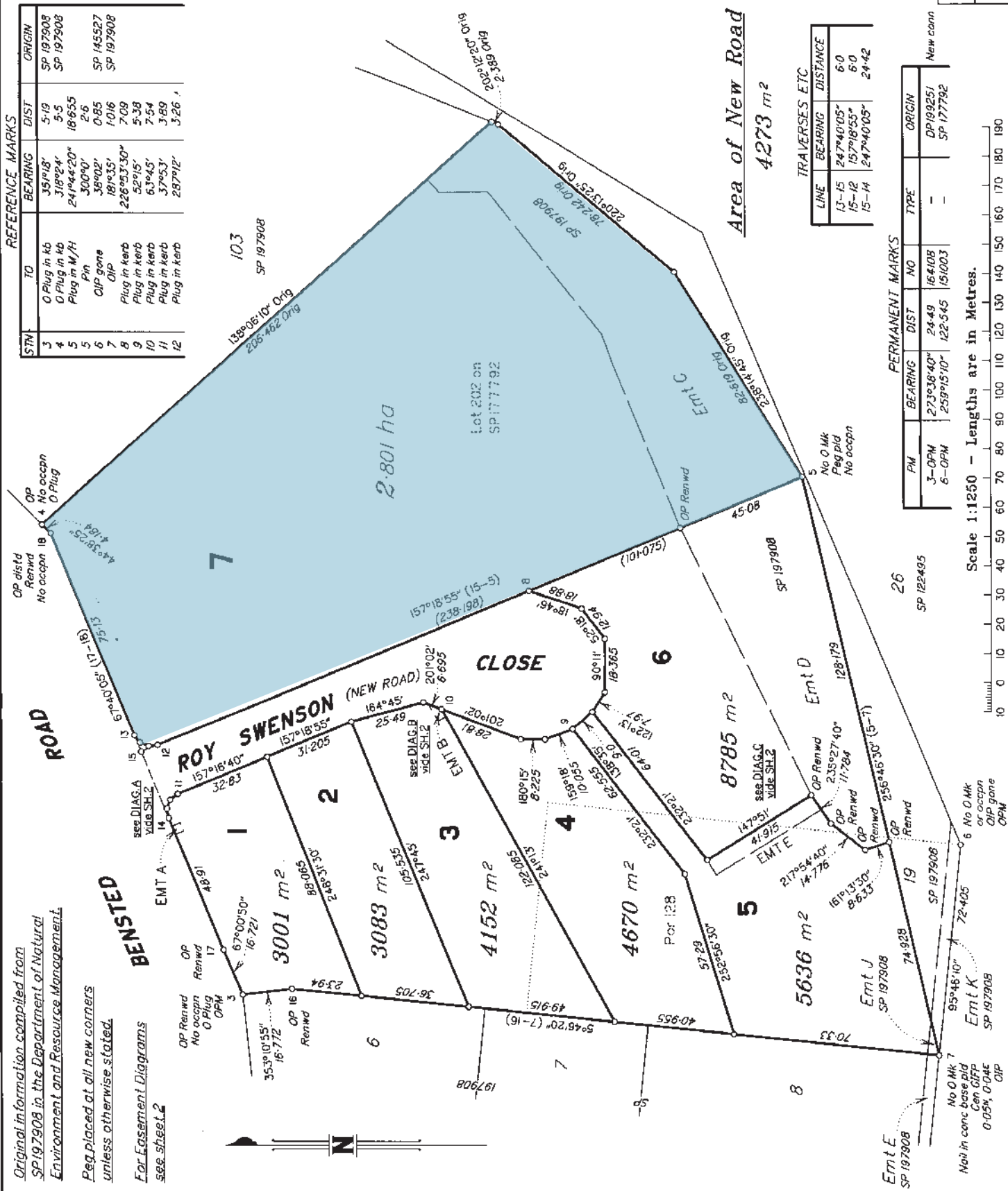


SURVEY PLAN

STN	TO	BEARING	DIST	ORIGIN
3	O Plug in kb	35°18'	5.19	SP 197908
4	O Plug in kb	318°24'	5.5	SP 197908
5	Plug in M/H	241°44'20"	18.655	
6	Pin	300°40'	2.6	
7	CIP gone	38°02'	0.85	SP 145527
8	OP	181°35'	1.016	SP 197908
9	Plug in kerb	226°53'30"	7.09	
10	Plug in kerb	52°15'	5.38	
11	Plug in kerb	63°45'	7.54	
12	Plug in kerb	37°53'	3.89	
	Plug in kerb	287°12'	3.26	



LINE	BEARING	DISTANCE
13-15	247°40'05"	6.0
15-12	157°18'55"	6.0
15-14	247°40'05"	24.42

PERMANENT MARKS			
PM	BEARING	DIST	NO
3-OPM	273°38'40"	24.49	164108
6-OPM	259°15'10"	122.545	151003

TRAVERSES ETC			
LINE	BEARING	DISTANCE	ORIGIN
13-15	247°40'05"	6.0	DP 199251
15-12	157°18'55"	6.0	SP 177792
15-14	247°40'05"	24.42	New conn

Scale 1:1250 - Lengths are in Metres.

Original information compiled from SP 197908 in the Department of Natural Environment and Resource Management.

Req placed at all new corners unless otherwise stated.

For Easement Diagrams see sheet L2

CAPRICORN SURVEY GROUP Pty Ltd (ACN 140 600 442), hereby certify that the land comprised in this plan was surveyed by the corporation, by Hendrik Frederik Adrian SWANPOEL, Surveying Associate, for whose work the corporation accepts responsibility, under the supervision of Richard Jon Knox FORD, cadastral surveyor, and that the plan is accurate, that the said survey was performed in accordance with the Survey and Mapping Infrastructure Act 2003 and Surveyors Act 2003 and associated Regulations and Standards and that the said survey was completed on 12/2/2010.

[Signature] Director & Cadastral Surveyor
23-02-10 Date

Plan of **Lots 1-7 and Emts A, B & E** in Lots 1, 3 & 5 Respectively
Cancelling Lots 4 & 5 on SP197908

PARISH: **AUCKLAND** COUNTY: **Clinton**

Meridian: **SP197908** F/N's: No

Scale: **1:1250**
Format: **STANDARD**

SP233782

Plan Status: