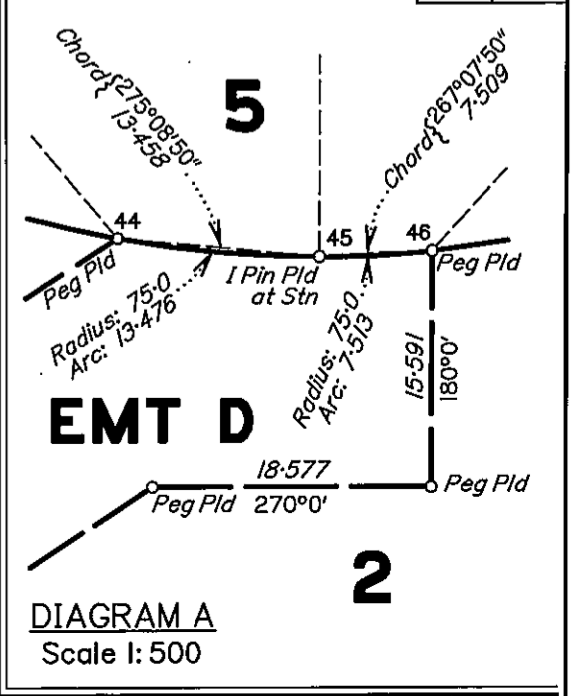
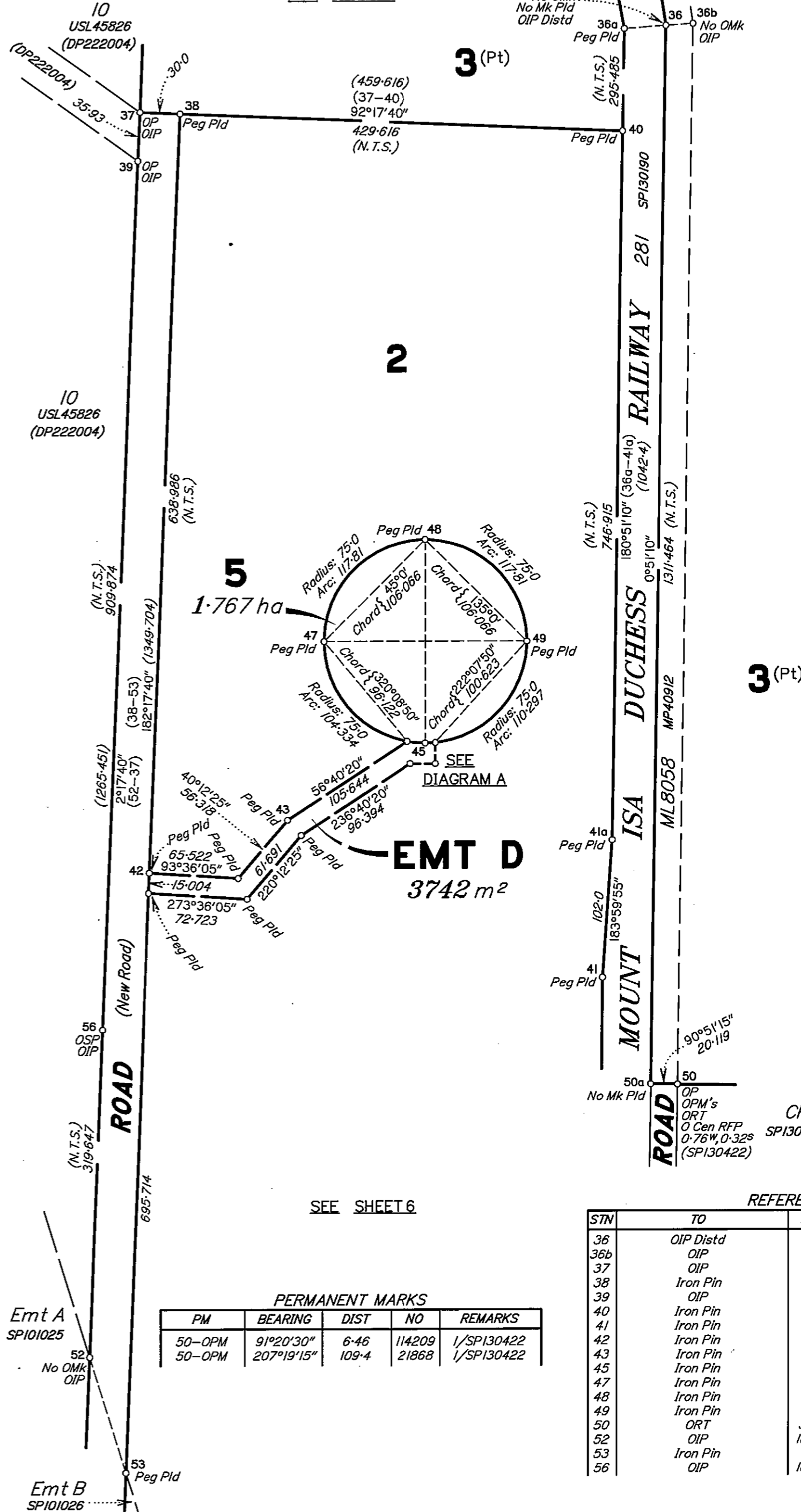


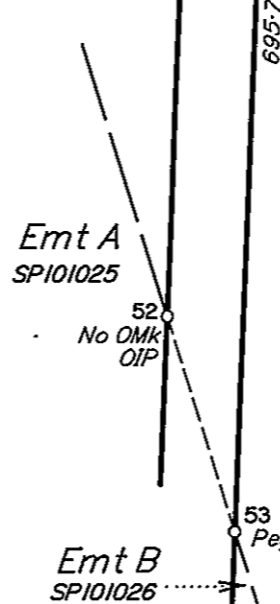
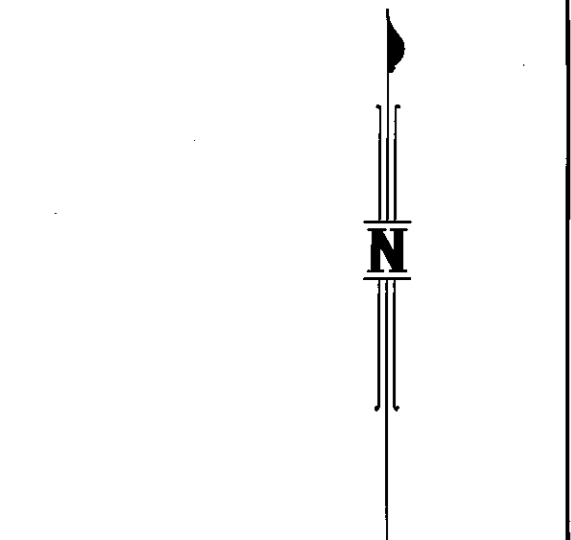
SEE SHEET 4

ADDITIONAL SHEET



TRAVERSES ETC

LINE	BEARING	DISTANCE
36-36a	265°46'45"	31.256
36-36b	85°52'50"	20.08
45-48	0°0'	150.0
47-49	90°0'	150.0
52-53	162°41'50"	89.435



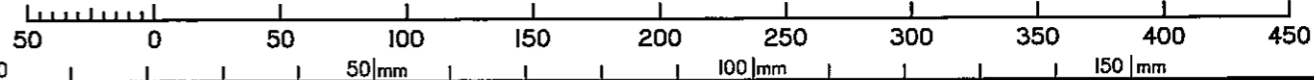
PERMANENT MARKS

PM	BEARING	DIST	NO	REMARKS
50-OPM	91°20'30"	6.46	114209	1/SPI30422
50-OPM	207°19'15"	109.4	21868	1/SPI30422

REFERENCE MARKS

STN	TO	BEARING	DIST	REMARKS
36	OIP Distd	263°48'	0.983	112/MP40912 (New Ref)
36b	OIP	265°53'	1.0	112a/MP40912
37	OIP	9°11'	0.93	12/DP222004
38	Iron Pin	8°02'	0.979	
39	OIP	198°15'	0.937	13/DP222004
40	Iron Pin	88°18'	1.177	
41	Iron Pin	5°33'	1.741	
42	Iron Pin	357°16'	1.337	
43	Iron Pin	335°04'	1.442	
45	Iron Pin at Stn			
47	Iron Pin	264°35'	1.10	
48	Iron Pin	4°33'	1.245	
49	Iron Pin	79°11'	1.238	
50	ORT	34°23'15"	23.255	8/MP4521
52	OIP	182°12'30"	1.65	7a/SPI101025
53	Iron Pin	4°59'	1.399	
56	OIP	182°17'55"	1.0	7c/SPI101026

Scale 1:3000 - Lengths are in Metres.



State copyright reserved.  
Insert Plan Number **SP222005**